

Bethel Elementary School 2024 Paint Scope – ADMIN SUITE ONLY

- PAINT ALL paintable doors, frames, storefronts and mullions, both sides, throughout suite (outlined in red below.) Prepare surfaces for proper adhesion prior to painting.
- Where applicable, repair all pre-cast joints, minor block joints and sheetrock cracks within painted areas. Patch all holes without screws or hanging equipment.
- Protect all murals unless otherwise noted.
- Protect all prometean boards and parts. Do not disassemble any parts.
- PAINT ALL PAINTABLE INTERIOR SURFACES INCLUDING CEILINGS, UNLESS OTHERWISE NOTED
- START AND STOP ALL ACCENT COLORS @ INSIDE CORNERS, UNLESS OTHERWISE NOTED
- NEW NEUTRAL = SW 7010 WHITE DUCK
- ALL WALLS TO BE NEW NEUTRAL, UNLESS OTHERWISE NOTED
- ALL INTERIOR HOLLOW METAL FRAMES AND DOORS TO MATCH EXISTING
- ALL OFFICES TO BE NEW NEUTRAL, UNLESS OTHERWISE NOTED
- ALL SINGLE OCCUPANT RESTROOMS TO BE NEW NEUTRAL
- EXTERIOR BLOCK WALL AT FRONT LOBBY HAS WATER DAMAGE – ENSURE PROPER PREP

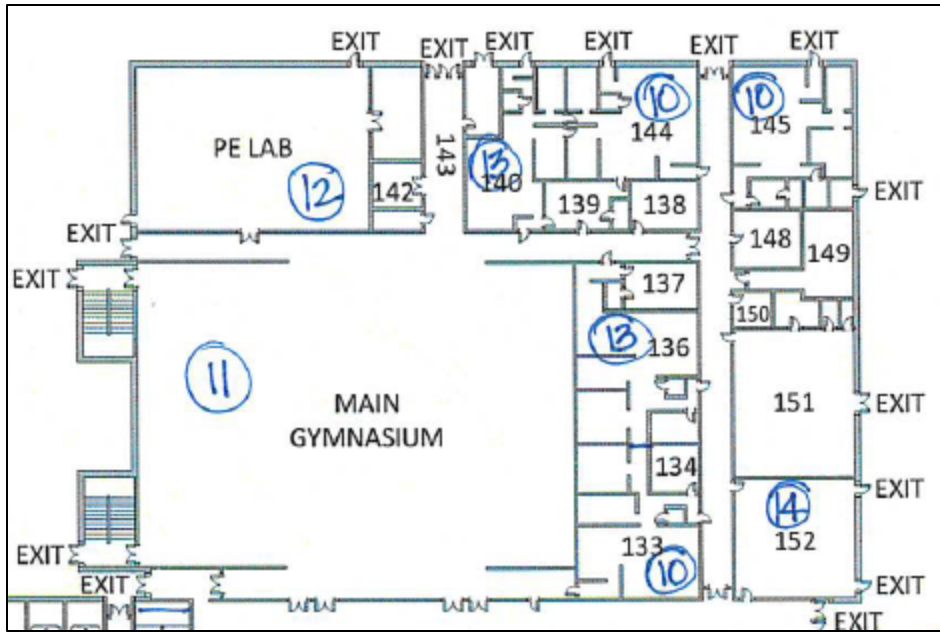


Greer High School 2024 Paint Scope – CORE SPACES

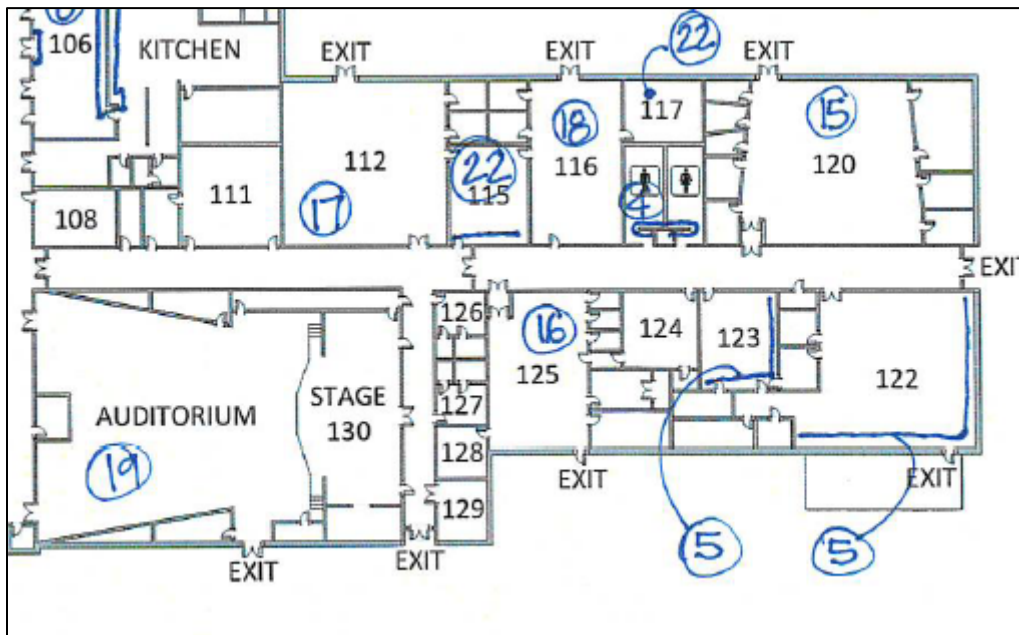
- PAINT ALL paintable doors, frames, storefronts and mullions, both sides, throughout facility. Prepare surfaces for proper adhesion prior to painting.
- Where applicable, repair all pre-cast joints, minor block joints and sheetrock cracks within painted areas. Patch all holes without screws or hanging equipment.
- Protect all murals unless otherwise noted.
- Protect all promethean boards and parts. Do not disassemble any parts.
- PAINT ALL PAINTABLE INTERIOR SURFACES INCLUDING CEILINGS, UNLESS OTHERWISE NOTED
- START AND STOP ALL ACCENT COLORS @ INSIDE CORNERS, UNLESS OTHERWISE NOTED
- NEW NEUTRAL = SW 7010 WHITE DUCK
- ACCENT 1 = SW 7663 MONORAIL SILVER
- ACCENT 2 = SW 7659 GRIS
- ACCENT 3 = SW 6390 BOSC PEAR
- ACCENT 4 = SW 6258 TRICORN BLACK
- EXTERIOR:
 - PAINT ALL HOLLOW METAL DOORS AND FRAMES SW 6258 TRICORN BLACK
- ALL WALLS TO BE NEW NEUTRAL, UNLESS OTHERWISE NOTED
- ALL INTERIOR HOLLOW METAL FRAMES AND DOORS TO MATCH EXISTING
- ALL STAIRWELLS: ACCENT 1 AT LANDING WALL; ACCENT STRIPING THROUGHOUT
- ACCENT STRIPING IN GROUP TOILETS AND STAIRS: TOP HALF OF TOP BLOCK NEW NEUTRAL; BOTTOM HALF OF TOP BLOCK ACCENT 3; NEXT FULL BLOCK ACCENT 4
- ACCENT STRIPING ON CORRIDOR WALLS: REPLACE GOLD STRIPING WITH ACCENT 3; REPLACE GREEN AND PURPLE STRIPING WITH ACCENT 4 – DO NOT LEAVE GAP; STOP STRIPING 8” FROM EACH END
- DO NOT PAINT CLASSROOMS, UNLESS OTHERWISE NOTED
- DO NOT PAINT SINGLE OCCUPANT RESTROOMS
- DO NOT PAINT OFFICES, UNLESS OTHERWISE NOTED
- INCLUDE PAINTING OF FINE ARTS WING – ALL SPACES INCLUDING CLASSROOMS & OFFICES (SEE DIAGRAM)
- INCLUDE PAINTING OF ATHLETICS WING – ALL SPACES INCLUDING CLASSROOMS & OFFICES (SEE DIAGRAM)
- INCLUDE \$20,000 ALLOWANCE TO REPLACE VINYL DECALS/LETTERING & TOUCH UP OR REPAINT YELLOW JACKET MURALS WHERE BEING COVERED
- ON CAMPUS ATHLETIC FACILITIES:
 - TICKET BOOTH – PAINT DOOR BLACK & ALL HOLLOW METAL FRAMES; PAINT INSIDE NEW NEUTRAL
 - CONCESSIONS – PAINT ALL RAILS BLACK; PAINT INSIDE NEW NEUTRAL
 - RESTROOMS – PAINT WOOD TRIM AT TOP NEW NEUTRAL; PARTIAL AND FULL BLOCK BELOW GOLD
 - SOFTBALL PRESSBOX - ALL DOORS AND FRAMES BLACK; NEW NEUTRAL EXTERIOR WITH ACCENT STRIPING AT WINDOW – GOLD STRIPE EXTENT OF WINDOW HEIGHT AROUND PERIMETER, 12” BLACK STRIPE ABOVE WINDOW AROUND PERMINATER; INSIDE NEW NEUTRAL; ALL STEEL OF STAIRS NEW NEUTRAL
 - SOFTBALL DUGOUT – NO PAINT
 - SOFTBALL STORAGE – PAINT DOORS AND FRAMES, AND WOOD AT DOOR HEAD BLACK
 - BASEBALL PRESSBOX – PAINT BLACK WITH GOLD STRIPE (2 BLOCKS); PAINT ALL WOOD DOORS/TRIM/WINDWOS BLACK; INSIDE NEW NEUTRAL
 - BASEBALL DUGOUT – PAINT GOLD STRIPE ACCENT 3
- OFF CAMPUS FOOTBALL STADIUM (8 BUILDINGS)
 - PAINT ALL BUILDINGS BASE ACCENT 3; NEXT BLOCK PAINT BLACK; ALL ELSE ACCENT 1
 - ALL BUILDINGS PAINT HOLLOW METAL DOORS AND FRAMES BLACK
 - ALL BUILDINGS PAINT INTERIOR WHITE DUCK
 - RESTROOMS: TOP WOOD TRIM BLACK; PARTIAL BLOCK BELOW ACCENT 3; AL ELSE WHITE DUCK

- PRESS BOX: PAINT EXTERIOR DOOR & FRAMES BLACK; PAINT INTERIOR FRAMES BLACK; NO PAINT ON WALLS

- ① DISPLAY CASE - PAINT FRAMES BLACK
- ② GREEN SCREEN; INCLUDE COLUMN & BUMP OUT
- ③ MEDIA CENTER: PAINT COLUMNS ACCENT 3; INCLUDE PAINTING OF OFFICES AND ROOMS – ACCENT 1 AT WALL ACROSS DOOR
- ④ GROUP TOILETS: ACCENT 2 WHERE SHOWN; ACCENT STRIPING THROUGHOUT; CEILINGS NEW NEUTRAL
- ⑤ ACCENT 1 WHERE SHOWN
- ⑥ MATCH ACCENT STRIPING OF STAIRS AND GROUP TOILETS
- ⑦ STAIRS: ACCENT 1 WHERE SHOWN; ACCENT STRIPING THROUGHOUT; CHANGE HANDRAILS TO ACCENT 4
- ⑧ KITCHEN: ACCENT 2 WHERE SHOWN; 2 DOORS TO CAFETERIA MATCH ACCENT SIZE AND LOCATION – CHANGE TO ACCENT 3 AND ACCENT 4; PAINT OVER STRIPES ON SIDE WALLS; PAINT ALL EXTERIOR AT DOCK AREA INCLUDING CEILINGS
- ⑨ PAINT DOWNSPOUT TO MATCH EXISTING
- ⑩ ATHLETIC LOCKER ROOMS: PREP AND PAINT LOCKERS ACCENT 4; MATCH STRIPE AND WAINSCOT WITH NEW GOLD AND BLACK - @ TOILET AREA WRAP TO FIRST INSIDE CORNER STOP
- ⑪ GYMNASIUM: PAINT CEILING AND STRUCTURE, AND DUCT WORK NEW NEUTRAL; COVER ALL YELLOW JACKETS AND LETTERING; REPAINT STRIPING AND DIAMONDS WITH NEW BLACK AND GOLD
- ⑫ PAINT 10 BLOCKS DOWN ACCENT 3; NEXT 2 BLOCKS DOWN ACCENT 4; NEW NEUTRAL ALL ELSE INCLUDE CEILINGS, STRUCTURE, AND DUCTWORK
- ⑬ GYM LOCKER ROOMS: PAINT ALL LOCKERS BLACK; ALL ELSE NEW NEUTRAL
- ⑭ ADD ONLY BLACK WAINSCOT AND GOLD STRIPE
- ⑮ REMOVE AND REINSTALL ACOUSTIC PANELS; TOP 3 FULL BLOCKS PAINT BLACK, GOLD, BLACK
- ⑯ ADD STRIPE @ TOP OF WALL - TOP HALF OF TOP BLOCK NEW NEUTRAL; BOTTOM HALF OF TOP BLOCK GOLD; NEXT FULL BLOCK BLACK
- ⑰ REPAINT ALL TO MATCH EXISTING; STRIPES TO MATCH ALL; YELLOW CHANGE TO ACCENT 3; GREY WAINSCOT = ACCENT 2; BLACK STRIPE CHANGE TO ACCENT 3
- ⑱ NEW NEUTRAL THROUGHOUT; COVER BLUE STRIPE; FIRST FIVE BLOCKS ACCENT 2; NEXT BLOCK ACCENT 3
- ⑲ AUDITORIUM: PAINT STAGE FLOOR BLACK – ENSURE PROPER PAINT AND PREP FOR COVERING WOOD FLOOR; PAINT STAGE FRONT BLACK WHERE CARPETING CURRENTLY IS; MATCH EXISTING COLOR AND EXTENTS; TAN CURVE @ GHS LETTERS CHANGE TO BLACK, PAINT AROUND LETTERS; PAINT BACK OF STAGE BLACK; PAINT SOFFIT @ ENTRY DOORS TO MATCH EXISTING; PAINT RAILING BLACK AT MEZZANINE
- ⑳ ACCENT WHERE SHOWN; OFFICES TO MATCH CLASSROOM WITH ACCENT ON WALL OPPOSITE DOOR
- ②① ALL NEUTRAL EXCEPT ISLAND TO BE ACCENT 1; 1 ½ STRIPE @ TOP OF ISLAND ACCENT 2
- ②② ACCENT 1 THROUGHOUT
- ②③ PAINT SMALL SOFFIT BLACK



Athletic Wing



Fine Arts Wing

MT Anderson 2024 Paint Scope – STORAGE ROOMS ONLY

- Where applicable, repair all pre-cast joints, minor block joints and sheetrock cracks within painted areas. Patch all holes without screws or hanging equipment.
- Protect all murals unless otherwise noted.
- Protect all prometean boards and parts. Do not disassemble any parts.
- PAINT ALL PAINTABLE INTERIOR SURFACES, UNLESS OTHERWISE NOTED (EXCLUDE CEILINGS)
- DO NOT PAINT HOLLOW METAL FRAMES AND DOORS
- START AND STOP ALL ACCENT COLORS @ INSIDE CORNERS, UNLESS OTHERWISE NOTED
- NEW NEUTRAL = SW 7668 MARCH WIND
- ALL WALLS TO BE NEW NEUTRAL, UNLESS OTHERWISE NOTED



PAINT

MT ANDERSON SUPPORT CENTER
PAINT SCOPE DIAGRAM





PAINT

MT ANDERSON SUPPORT CENTER
PAINT SCOPE DIAGRAM



Slater Marietta Elementary School 2024 Paint Scope – Hallway & 2 Classrooms

- Where applicable, repair all pre-cast joints, minor block joints and sheetrock cracks within painted areas. Patch all holes without screws or hanging equipment.
- Protect all promethean boards and parts. Do not disassemble any parts.
- START AND STOP ALL ACCENT COLORS @ INSIDE CORNERS, UNLESS OTHERWISE NOTED
- NEW NEUTRAL = COLOR MATCH (SEE PHOTO BELOW)
- ACCENT 1 = SW 6787 FOUNTAIN
- PAINT “HARRY POTTER” THEMED WALLS ON 4TH GRADE HALLWAY NEW NEUTRAL (HALLWAY SHOWN BELOW)
- PAINT CLASSROOMS 506 AND 507 NEW NEUTRAL WITH ACCENT 1 @ EXTERIOR WALL – DO NOT PAINT 505 & 508
- DO NOT PAINT HOLLOW METAL FRAMES



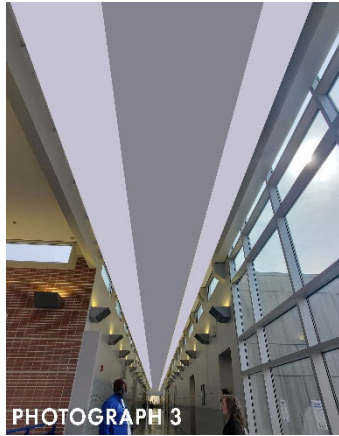
Travelers Rest High School 2024 Paint Scope - CORE SPACES

- PAINT ALL PAINTABLE DOORS, FRAMES, STOREFRONTS AND MULLIONS, BOTH SIDES, THROUGHOUT FACILITY. PREPARE SURFACES FOR PROPER ADHESION PRIOR TO PAINTING.
- WHERE APPLICABLE, REPAIR ALL PRE-CAST JOINTS, MINOR BLOCK JOINTS AND SHEETROCK CRACKS WITHIN PAINTED AREAS. PATCH ALL HOLES WITHOUT SCREWS OR HANGING EQUIPMENT.
- PAINT OVER ALL MURALS EXCEPT WHERE NOTED.
- PROTECT ALL PROMETHEAN BOARDS AND PARTS. DO NOT DISASSEMBLE ANY PARTS.
- PAINT ALL PAINTABLE CORE INTERIOR SURFACES INCLUDING CEILINGS, UNLESS OTHERWISE NOTED
- START AND STOP ALL ACCENT COLORS @ INSIDE CORNERS, UNLESS OTHERWISE NOTED
- NEW NEUTRAL = SW 9166 DRIFT OF MIST
- ACCENT 1 = SW 6526 ICELANDIC
- ACCENT 2 = SW 6241 ALEUTIAN
- ACCENT 3 = SW 6966 BLUEBLOOD
- ACCENT 4 = SW 6907 FORSYTHIA
- ACCENT 5 = SW 7073 NETWORK GRAY
- COLOR 6 = SW 7043 WORLDLY GRAY
- EXTERIOR:
 - PAINT ALL HOLLOW METAL DOORS AND FRAMES COLOR 6
 - PAINT ALL PAINTED HANDRAILS, INCLUDING ALL AT ATHLETIC FACILITIES, TBD <CONSIDER ACCENT 3>
- ALL INTERIOR HOLLOW METAL FRAMES AND DOORS TO BE COLOR 6
- ALL WALLS TO BE NEW NEUTRAL, UNLESS OTHERWISE NOTED
- 1ST FLOOR CLASSROOM CORRIDORS: 8" ABOVE DOOR HEAD TO BE ACCENT 3; 4" ABOVE TO BE ACCENT 4; 4" ABOVE TO BE ACCENT 5 - DO NOT PAINT CLASSROOMS
- 2ND FLOOR CLASSROOM CORRIDORS: FULL BLOCK ABOVE DOOR HEAD TO BE ACCENT 3; 4" ABOVE TO BE ACCENT 4; 4" ABOVE TO BE ACCENT 5; SEE PHOTOGRAPH 4 - DO NOT PAINT CLASSROOMS
- LOWER LEVEL CLASSROOM CORRIDORS: FULL BLOCK ABOVE DOOR HEAD TO BE ACCENT 3; 4" ABOVE TO BE ACCENT 4; 4" ABOVE TO BE ACCENT 5 - DO NOT PAINT CLASSROOMS
- RESTROOMS ON 1-5 WINGS, ALL 3 FLOORS: ACCENT 3 WHERE SHOWN
- RESTROOMS ON 10-15 WINGS, ALL 3 FLOORS: ACCENT 4 WHERE SHOWN
- ATHLETIC FACILITIES:
 - TICKET BOOTH: PAINT INSIDE NEW NEUTRAL;
 - BOTH CONCESSIONS AND RESTROOM BUILDINGS: PAINT INSIDE NEW NEUTRAL; PAINT ACCENT 3 STRIPE BETWEEN WINDOWS ON BOTH SMOOTH PRECAST SIDES, WRAP AROUND PRECAST TO INSIDE CORNER; PAINT 8" BAND OF ACCENT 4 ABOVE BLUE STRIPE; SEE PHOTOGRAPH 1
 - RESTROOM INTERIORS: PAINT 13TH BLOCK ACCENT 3; PAINT BOTTOM 3" OF 14TH BLOCK ACCENT 4; NEW NEUTRAL ALL ELSE; PAINT CEILING AND PRECAST DOUBLE TS WHITE
 - SOFTBALL DUGOUT: PAINT EXISTING BLUE FACIA ACCENT 3; PAINT EXISTING BROWN STRIPE ACCENT 4
 - BASEBALL PRESSBOX: PAINT DOOR AND FRAME TO MATCH EXISTING
 - BASEBALL DUGOUT: PAINT EXISTING BLUE TRIM ACCENT 3; PAINT EXISTING BROWN STRIPE ACCENT 4
 - FOOTBALL PRESSBOX: PAINT EXTERIOR DOORS & FRAMES TO MATCH EXISTING; PAINT INTERIOR FRAMES BLACK; DO NOT PAINT WALLS

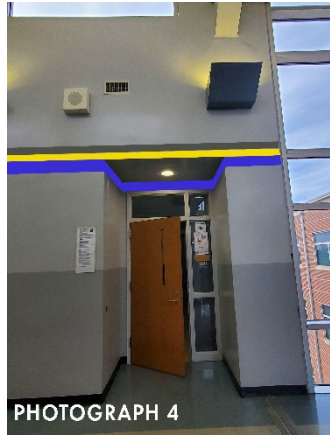
- 1) PRESERVE MURAL
 - A. VERIFY BOTH MURALS TO BE KEPT
- 2) PAINT EXISTING BRICK WALLS WITH HORIZONTAL STRIPES, 4 COLORS TBD; SEE PHOTOGRAPH 2; PREP PRECAST PANELS FOR PROPER ADHESION
- 3) NOT USED
- 4) PAINT RAILING COLOR 6
 - A. VERIFY
- 5) STAIRWELL SCHEME: ALL RAILINGS AND STAIR STEEL ACCENT 3; PAINT WALL @ LANDING, AT EACH LANDING: TOP 4" ACCENT 5, NEXT 4" ACCENT 4, NEXT 8" ACCENT 3, REMAINDER OF THIS WALL ACCENT 5; SEE DIAGRAM 1 BELOW
- 6) PAINT VERTICAL SURFACES OF LIGHTWELLS ACCENT 1; ALL OTHER PAINTABLE CEILINGS TO BE CEILING WHITE; PAINT ROUND COLUMNS ACCENT 3
- 7) GYMNASIUM: COVER MURALS; PAINT ACOUSTICAL PANELS; SCHEME TBD – ASSUME 4 COLOR STRIPE AS ACCENT; PAINT CEILING TO MATCH WALL NEUTRAL
 - A. CONSIDER MATCHING BLUE COLS & WALLS
- 8) COVER MURALS; PAINT CEILING; PAINT NEUTRAL THROUGHOUT; 13TH BLOCK ACCENT 3, AROUND ENTIRE SPACE; 14TH BLOCK, BOTTOM HALF ACCENT 4
- 9) ACCENT KITCHEN SERVING WALL ACCENT 2 BOTH SIDES
- 10) PAINT CMU WALLS COLOR 6; PAINT CEILING AND EDGE OF PRECAST CEILING ONLY
- 11) ATHLETIC CORRIDORS: ALL DRYWALL SOFFIT ACCENT 1; ACCENT STRIPE THROUGHOUT ALL CORRIDORS: TOP BLOCK, TOP HALF ACCENT 5; BOTTOM HALF OF TOP BLOCK ACCENT 4; NEXT BLOCK ACCENT 3; OFFICES NO PAINT
- 12) NEW NEUTRAL THROUGHOUT; ACCENT WHERE SHOWN: TOP 4", ACCENT 5, NEXT 4" ACCENT 4, NEXT 8" ACCENT 3; REMAINDER OF WALL ACCENT 5; PRESERVE EXISTING YELLOW WITH BLUE LETTERING
- 13) NEW NEUTRAL THROUGHOUT, INCLUDING ACOUSTICAL PANELS; BELOW ACOUSTICAL PANELS: TOP 4", ACCENT 5, NEXT 4" ACCENT 4, NEXT 8" ACCENT 3
- 14) NEW NEUTRAL THROUGHOUT; LOCKER BASES ACCENT 5; ACCENT STRIPE THROUGHOUT: TOP 4", ACCENT 5, NEXT 4" ACCENT 4, NEXT 8" ACCENT 3
- 15) NEW NEUTRAL THROUGHOUT; LOCKER BASES ACCENT 5
- 16) THEATRE STORAGE AREA: PAINT ALL FRAMES AND DOORS TO MATCH REMAINDER OF SCHOOL; STAGE – PAINT ALL WALLS BLACK; PAINT STAGE-SIDE OF ALL DOORS BLACK, INCLUDING FRAMES; PAINT STAGE FLOOR BLACK
- 17) AUDITORIUM: PAINT EXISTING WHITE SOUND PANELS BLACK; PAINT ALL NEUTRAL WALLS NEW NEUTRAL; PAINT LIGHT BLUE ACCENT 1; MEDIUM BLUE ACCENT 2; DARK BLUE 3; ALL WALLS WITH ALUMINUM REGLETS – DO NOT PAINT THESE, KEEP AS EXPOSED SILVER; PAINT ALL SOUND BOOTH WALLS BLACK
- 18) NOT USED
- 19) GUIDANCE SUITE: PAINT NEW NEUTRAL THROUGHOUT; PAINT EXISTING BLUE WALL ACCENT 5; PAINT ACCENT 3 WHERE SHOWN - DO NOT PAINT OFFICES
- 20) MUSIC ROOMS: PAINT ALL INSULATION-TYPE CEILING MATERIAL BLACK; PAINT WALLS NEUTRAL THROUGHOUT; PAINT ACCENT 3 WHERE SHOWN, FLOOR TO CEILING; PAINT ALL PAINTABLE WALL MOUNTED SOUND BAFFLES WHITE
- 21) FRONT LOBBY & ADMIN: PAINT EXISTING BLUE WALL ACCENT 3. PAINT OVER DEVILDOG MURAL – THIS WALL TO BE ACCENT 3; WING WALL TO THE LEFT TO BE ACCENT 4, ALL 3 SIDES; HALLWAY NEW NEUTRAL; DO NOT PAINT OFFICES
- 22) DRYWALL CEILING @ 2ND FLOOR CORRIDOR AND MAIN ENTRYWAY: HIGHEST DRYWALL TO BE ACCENT 1; LOWER DRYWALL SECTION TO BE ACCENT 2
- 23) MEDIA CENTER: PAINT EXISTING BLUE ACCENTS ACCENT 3; PAINT ACCENT WHERE SHOWN, ACCENT 2; DRYWALL BAND @ HIGH CEILING TO BE ACCENT 4; DO NOT PAINT OFFICES/ROOMS
- 24) GROUP TOILETS @ COMMONS AREA: NEW NEUTRAL THROUGHOUT; ACCENT STRIPE THROUGHOUT: TOP 4", ACCENT 5, NEXT 4" ACCENT 4, NEXT 8" ACCENT 3



PHOTOGRAPH 1



PHOTOGRAPH 3



PHOTOGRAPH 4

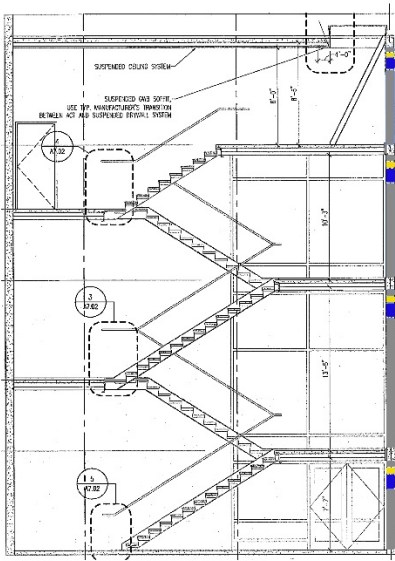


DIAGRAM 1

Wade Hampton High School 2024 Paint Scope – CORE SPACES

- PAINT ALL paintable doors, frames, storefronts and mullions, both sides, throughout facility. Prepare surfaces for proper adhesion prior to painting.
- Where applicable, repair all pre-cast joints, minor block joints and sheetrock cracks within painted areas. Patch all holes without screws or hanging equipment.
- Protect all murals unless otherwise noted.
- Protect all promethean boards and parts. Do not disassemble any parts.
- PAINT ALL PAINTABLE INTERIOR SURFACES INCLUDING CEILINGS, UNLESS OTHERWISE NOTED
- START AND STOP ALL ACCENT COLORS @ INSIDE CORNERS, UNLESS OTHERWISE NOTED
- DO NOT PAINT SINGLE OCCUPANT RESTROOMS
- DO NOT PAINT CLASSROOMS, UNLESS OTHERWISE NOTED
- DO NOT PAINT OFFICES, UNLESS OTHERWISE NOTED
- INCLUDING PAINTING OF ATHLETIC WING - ALL SPACES INCLUDING OFFICES (SEE DIAGRAM)
- NEW NEUTRAL = SW 7661 REFLECTION
- ACCENT 1: SW 6871 Positive Red
- ACCENT 2: SW 7073 Network Gray Mid gray
- ACCENT 3: SW 6257 Gibraltar Dark gray
- ACCENT 4: SW 7663 Monorail Silver Light gray
- PE106: All walls = SW 7073 Network Gray
- Cafeteria:
 - All walls = new neutral
 - Soffit: new red @ insets, to match existing extents; rectangular soffit between angled ceilings: inside vertical face to be SW 6257 Gibraltar
 - Preserve murals @ slanted ceilings
- Kitchen:
 - New neutral throughout, including over existing W, H, red and black accents
 - (4) ceiling soffits - paint interior vertical face SW 6871 Positive Red to match cafeteria
 - Accent SW 7073 Network Gray where shown
 - All handrails to be black
- Group toilets @ cafeteria:
 - All walls = new neutral except as noted below
 - Add accent to top block around entire room; accent = SW 6871 Positive Red
 - Accent wall shown, inside corner to inside corner; accent = SW 6257 Gibraltar
- Auditorium:
 - Paint stage floor black
 - Existing dark gray walls to be SW 7073 Network Gray (including ceiling in this area)
 - All other auditorium walls = new neutral
 - ADA ramp: handrail & mesh panels = SW 7073 Network Gray
- Group toilets on related arts corridor, new neutral throughout
- Corridor serving FA102 - FA 107:
 - New neutral throughout
 - All insets to classrooms = SW 7073 Network Gray
- Health suite:
 - Paint new neutral throughout

- Add accent where shown; accent = SW 7073 Network Gray
- Do not paint offices or restrooms
- Insets to classrooms on 100, 200 & 300 Corridors: Inside corner to inside corner; accent = SW 7073 Network Gray
- Front office & admin suite
 - All walls = new neutral unless noted otherwise
 - Wall behind reception desk = SW 7073 Network Gray
 - Do not paint offices
- Corridor accent where shown; accent = SW 7663 Monorail Silver
- EXTERIOR:
 - PAINT ALL HOLLOW METAL DOORS AND FRAMES TO MATCH EXISTING
- ATHLETIC FACILITIES (ON CAMPUS)
 - PAINT ALL HOLLOW METAL DOORS AND FRAMES TO MATCH EXISTING
 - PAINT ALL HANDRAILS TO MATCH EXISTING
 - PAINT STORAGE BUILDING EXTERIOR NEW NEUTRAL
 - PAINT ALL OTHER BUILDINGS ACCENT 2 AT LOWER 5 BLOCKS; ACCENT 1 NEXT BLOCK UP; ACCENT 3 NEXT BLOCK UP; ACCENT 2 REMAINING INCLUDING PAINTABLE UPPER TRIM
 - PRESERVE SHIELD MURAL AT RESTROOM BUILDING – TERMINATE ACCENT STRIPING AT MURAL AT ANGLE TO CREATE DIAMOND BORDER; COVER GENERAL LETTERING
 - RESTROOMS NEW NEUTRAL; UPPER TRIM PIECE ACCENT 3; PARTIAL BLOCK ACCENT 1
- ATHLETIC FACILITIES (OFF CAMPUS)
 - PRESSBOX - ACCENT 2 AT LOWER 5 BLOCKS; ACCENT 1 NEXT BLOCK UP; ACCENT 3 NEXT BLOCK UP; ACCENT 2 REMAINING INCLUDING UPPER SECTION
 - SOFTBALL DUGOUTS – PAINT FACIA ACCENT 2; TOP BLOCK ACCENT 2; NEXT BLOCK ACCENT 3; NEXT BLOCK ACCENT 1; ALL ELSE BELOW ACCENT 2; COVER MURAL
 - BASEBALL DUGOUTS - PAINT FACIA ACCENT 2; TOP BLOCK ACCENT 2; NEXT BLOCK ACCENT 3; NEXT BLOCK ACCENT 1; ALL ELSE BELOW ACCENT 2; COVER MURAL

① Gymnasium

- Paint everything @ ceiling plane including structure, ductwork & decking;
- Existing red walls = SW 6871 Positive Red
- Existing white walls = SW 7073 Network Gray

② Main Athletic Corridor between Gymnasium & PE106:

- All walls, except as noted below: SW 7663 Monorail Silver
- Corridor wall adjacent to PE106 (from exterior door to exterior door, wrapping corner): 1st 6 courses = SW 7073 Network Gray; 7th course = SW 6871 Positive Red; all other courses = SW 7663 Monorail Silver
- All GWB soffits over doors in these corridors: horizontal and vertical surface(s) to match adjacent wall color
- (3) exterior door walls & (1) door entering commons: SW 6871 Positive Red, inside corner to inside corner (walls only)
- Door insets to multi-purpose room, auxiliary gym and (2) locker rooms across the hall: SW 6871 Positive Red, inside corner to inside corner (walls only)
- Inset @ drinking fountain = SW 6871 Positive Red

③ All walls new neutral with accent 2 where shown; If accent wall is not identified on plan, paint new accent on existing accent wall – NO PAINT IF CLASSROOM, UNLESS ON ATHLETIC WING

④ Locker Rooms

- Paint all paintable ceilings ceiling white
- All walls = SW 7663 Monorail Silver
- All concrete countertops & concrete locker bases = SW 7073 Network Gray

⑤ Aux Gym & Multipurpose Room Bottom stripe = SW 7073 Network Gray

- Red stripe = SW 6871 Positive Red
- All other wall surfaces = new neutral
- Paint everything @ ceiling plane including structure, ductwork & decking

⑥ PE118 All walls = SW 7663 Monorail Silver

⑦ Do not paint

⑧ Soffit: Paint interior vertical face of soffit SW 6257 Gibraltar

⑨ Soffit: Paint horizontal & vertical faces of soffit SW 7073 Network Gray

⑩ Group toilets on classroom corridors:

- Drinking fountain insets, inside corner to inside corner = SW 6871 Positive Red
- Accent wall where shown = SW 7073 Network Gray

⑪ Media Center (INCLUDE OFFICES & ROOMS):

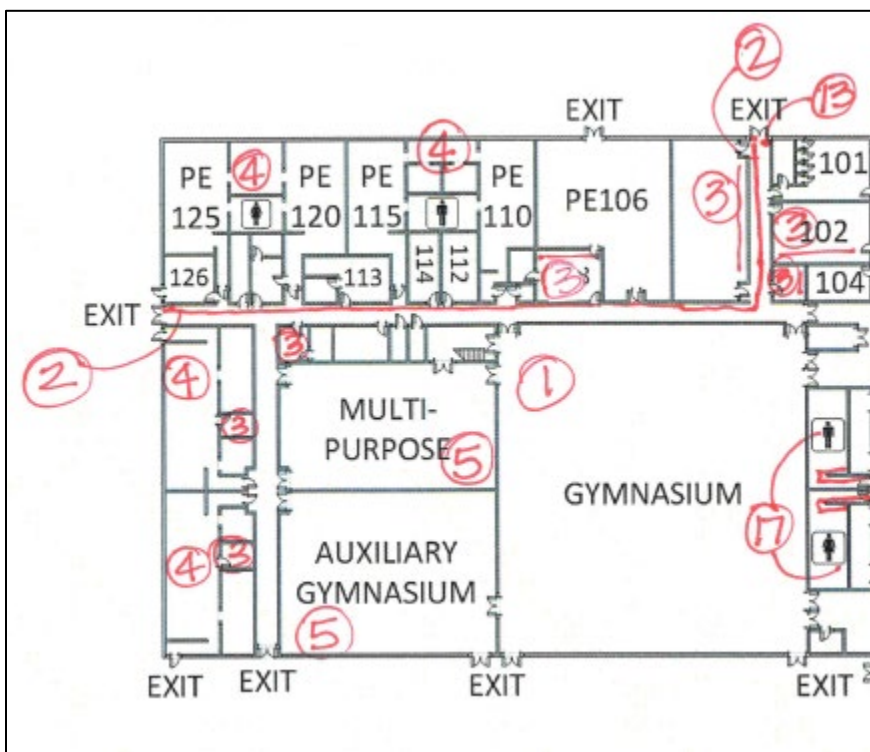
- Cover murals @ soffit
- All walls = SW 7663 Monorail Silver except as noted below
- Existing dark gray wall = SW 6257 Gibraltar
- Accent where shown = SW 7073 Network Gray

- Soffit above circulation desk:
 - Vertical & horizontal surfaces = SW 6871 Positive Red
 - All other soffits to be ceiling white
- Paint existing accent wall in office SW 7073 Network Gray

⑫ Guidance Suite: All walls new neutral except as noted below:

- Existing accent wall with gray/red angled line: match pattern with new colors (Network Gray & Positive Red)
- All offices NO PAINT
- Accent = SW 7663 Monorail Silver where shown
- Steel @ fire shutter: paint to match adjacent wall color

⑬ Accent inside corner to inside corner, Accent = SW 6871 Positive Red



Athletic Wing